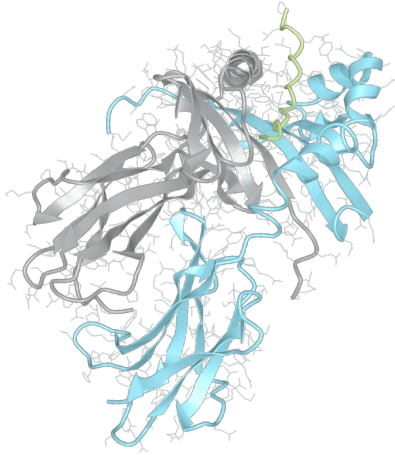


Product datasheet



sHLA– DQB1*03:02bio DQA1*04:01bio

DQB1*0302, DQB10302, DQB1*03, DQB03, DQ8
DQA1*0401, DQA10401, DQA1*04, DQA04

Serological Name	DQ8
Peptide Load	Endogenous
Modification	Unmodified
Conjugation	Biotin
SKU	DQB10302/DQA10401bio

Product Description

Allele Name	DQA1*04:01 DQB1*03:02
HLA Class	HLA Class II
HLA Gene Locus	HLA-DQ
Alternative Allele Name A Chain	DQA1*0401, DQA10401, DQA1*04, DQA04
Alternative Allele Name B Chain	DQB1*0302, DQB10302, DQB1*03, DQB03, DQ8
Description	Recombinant, truncated Class II soluble Human Leukocyte Antigen (sHLA), naturally folded and glycosylated, loaded with endogenous peptides.
Serological Name	DQ8
Serological Split	DQ3
Allele Frequency [World Population]	
A chain	7.1%
B chain	15.9%

Associated products

[DQB10302/DQA10401](#)
[DQB10302/DQA10401pe](#)

Product Specification

Product name	HLA-DQB1*03:02/DQA1*04:01bio
HLA Species	Human
Host Cell Line Species	Mouse
Clone Designation	
Tail Specification	ZP
Peptide Load	Endogenous
Modification	Unmodified
Conjugation	Biotin
Complexity	Monomer
Protein Format	Recombinant, truncated, zipper-stabilized, soluble, non-modified, biotinylated, endogenously loaded
Storage Temperature	4°C (This product should be stored undiluted)
Form	Liquid
Concentration	300.0 µg/µl
Formulation	PBS/0.02% Sodium Azide
pH	7.4
Purification Method	Affinity Chromatography
Grade	Research Use Only [RUO]
Authentication Verification	Sequence Based Typing

Protein Sequences

Alpha Chain Sequence	EDIVADHVAS YGVNLYQSYG PSGQYTHEFD GDEQFYVDLG RKETVWCLPV LRQFR.FDPQ FALTNIQVTK HNLNLIKRS NSTAATNEVP EVTVFSKSPV TLGQPNTLIC LVDNIFPPVV NITWLSNGHS VTEGVSETSF LSKSDHSFFK ISYLTFLPSA DEIYDCKVEH WGLDEPLLKH WEPEIPAPMS EVDGGGGGAQ LEKELQALEK ENAQLEWELQ ALEKELAQ
Beta Chain Sequence	RDSPEDFYVQ FKGMCYFTNG TERVRLVTRY IYNREEYARF DSDVGVYRAV TPLGPPAAEY WNSQKEVLER TRAEALDTCR HNYQLELRTT LQRRVEPTVT ISPSRTEALN HHNLLVCSVT DFYPAQIKVR WFRNDQEETT GVVSTPLIRN GDWTFQILVM LEMTPQRGDV YTCHVEHPSL QNPTIIVEWRA QSESAQSKVD GGGGAQLKK KLQALKKKNA QLKWKLQALK KCLAQ

Related Products

[DQB10305/DQA10401bio](#)
[DQB10301/DQA10201bio](#)
[DQB10602/DQA10102bio](#)
[DQB10302/DQA10201bio](#)

Applications

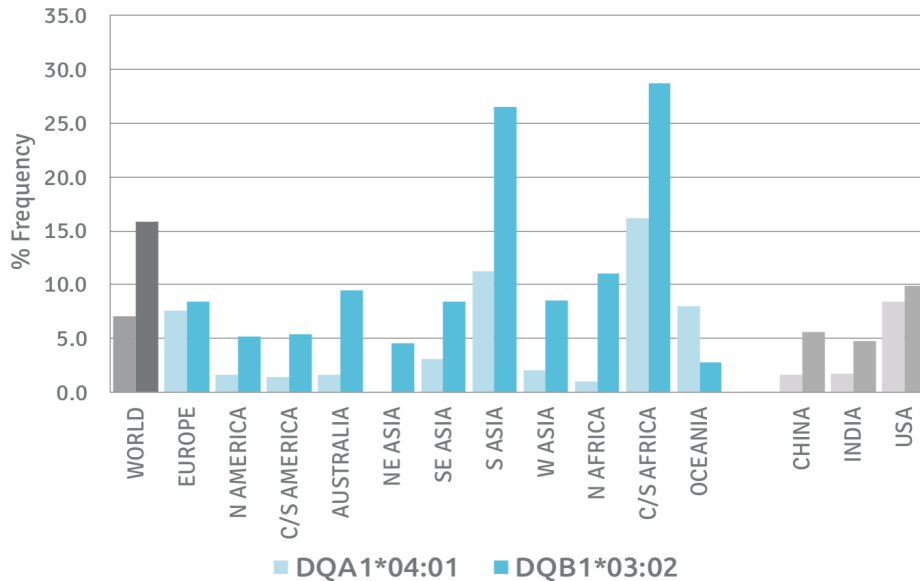
HLA Sandwich ELISAs
 HLA Direct ELISAs
 HLA-Sera Antibody Assays
 HLA Controls in ELISA Assays
 HLA Assay Standards
 HLA Blocking Assays
 HLA Neutralizing Assays
 HLA Competition Assays
 HLA Bead Assays
 HLA Immunization Procedures

Recommended Antibodies

-

Allele Frequency

Worldwide Allele Frequency



Please note:

ALL PRODUCTS ARE FOR RESEARCH USE ONLY. NOT FOR COMMERCIAL USE IN DIAGNOSTIC PROCEDURES.
 For more information, please visit our Policies section on our website. For licensing inquiries, please contact

licensing@hlaprotein.com

HLA Protein
 PURE PROTEIN LLC

Eplet Assignments**DQB1*03:02**

Eplet	Polymorphic Residues	Antibody Reactivity
3S	3S	
9Y	9Y	
13GM	13G14M	
23R	23R	
26L	26L	
37YA	37Y38A	
45G	45G	
45GV	45G46V	Yes
46VY	46V 52P 28T	Yes
55PP	55P56P	Yes
55PPA	55P56P57A	
56P	56P	
56PA	56P57A	
66ER	66E67V70R71T	
66EV	66E67V	
67VT	67V71T	
70RT	70R71T	
74EL	74E75L77T	
77T	77T	Yes
84QL	84Q 86E 87L 89T 90T 125A	Yes
130R	130R	
135D	135D	
167R	167R	
182N	182N	Yes
185I	185I	

Eplet Assignments**DQA1*04:01**

Eplet	Polymorphic Residues	Antibody Reactivity
2D	2D 199A	Yes
25YT	25Y26T	
40GR	40G 47C 50V 51L	Yes
61FT	61F 64T 55R	Yes
66IT	66I69T	
75I	75I 161D 163I	
75IL	75I76L	
76L	76L	
129H	129H	
160A	160A	
160AD	160A161D	
175E	175E	